

Red Hat  
**Summit**

**Connect**

# Automation experience

**From Datacenter to the Edge and everything in between**

Belkacem MOUSSOUNI

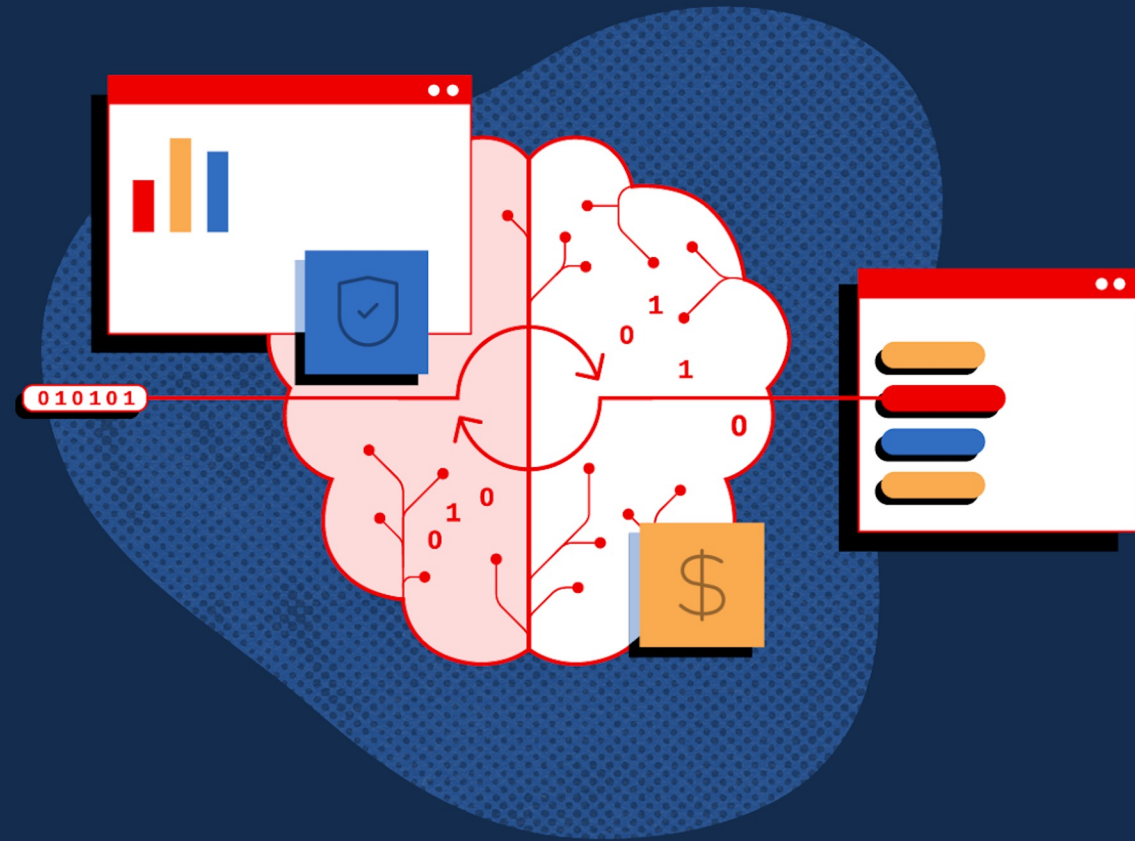
Head of Business Development EMEA, Red Hat - Automation

*[linkedin.com/in/belkacemmoussouni/](https://www.linkedin.com/in/belkacemmoussouni/)*



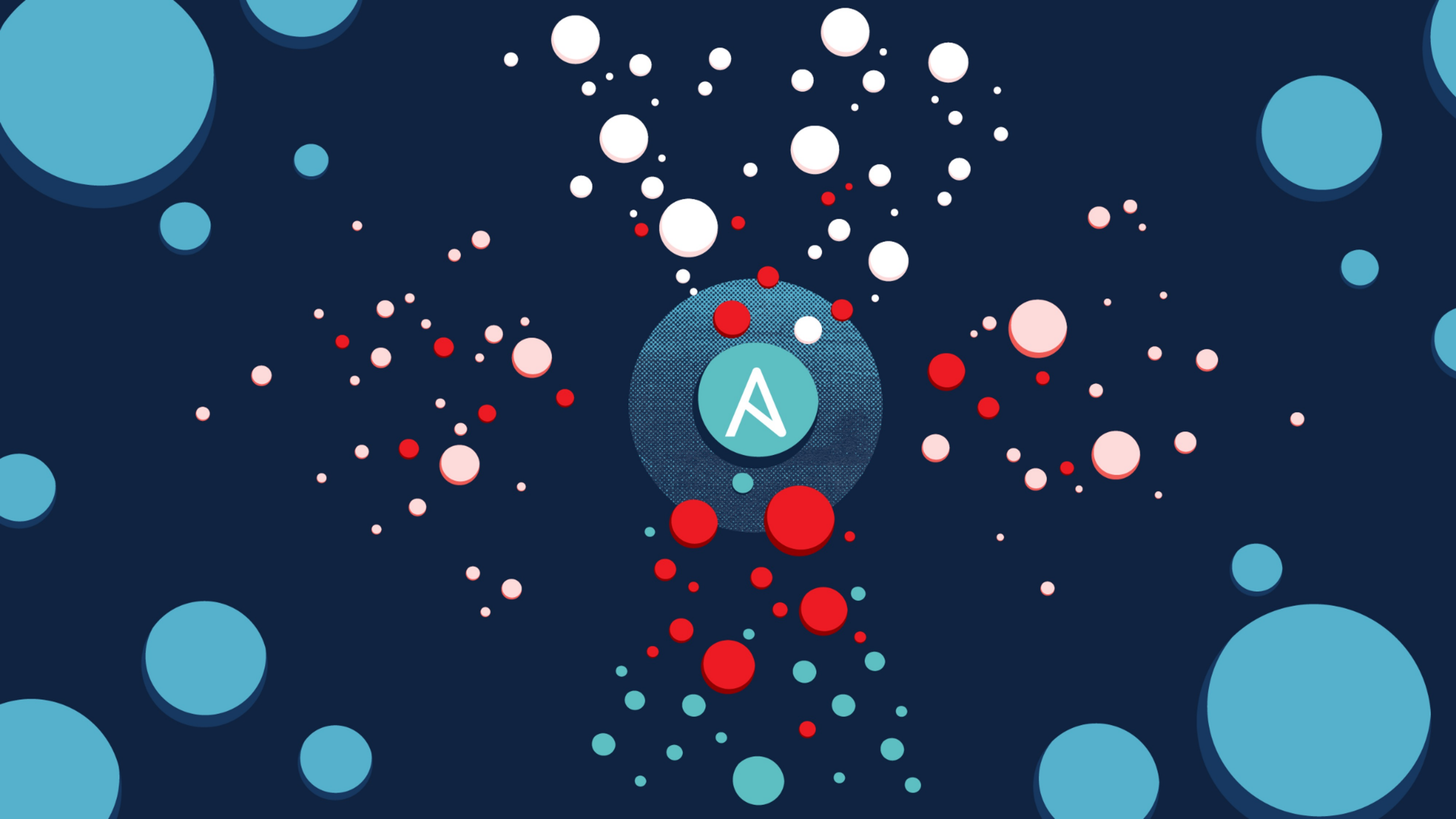
By 2027, AI automation will improve key service-level objectives and reduce manual operations intervention by

70%



Source:

Turner, Mary Johnston. "IDC FutureScape: Worldwide Future of Digital Infrastructure 2023 Predictions." IDC, Dec. 2022.



# Automation that does more





platform engineering



# Customers experience remarkable results



667%

five-year ROI



10months

To payback



76%

reduction in  
unplanned downtime

**Use automation to transform IT and deliver results**

Source:

[The Business Value of Red Hat Ansible Automation Platform](#),



# The enterprise Automation Journey...



# Event-Driven Ansible

**Implement** event-driven automation within and across multiple IT use cases



**Automate** decision making

**Leverage** numerous sources of events

8

**Achieve new milestones in efficiency, service delivery excellence and cost savings**





**Ansible Lightspeed  
with IBM watsonx Code Assistant**

The background features a dark blue field with a light blue, minimalist circuit diagram. The diagram consists of several rectangular components connected by thin lines. Some components have small circles on their sides, and there are some horizontal lines within certain boxes, suggesting a technical or digital theme.

**and**

# Automate across your ecosystem

150+

Certified Content Collections

55+

Certified Technology partners

100+

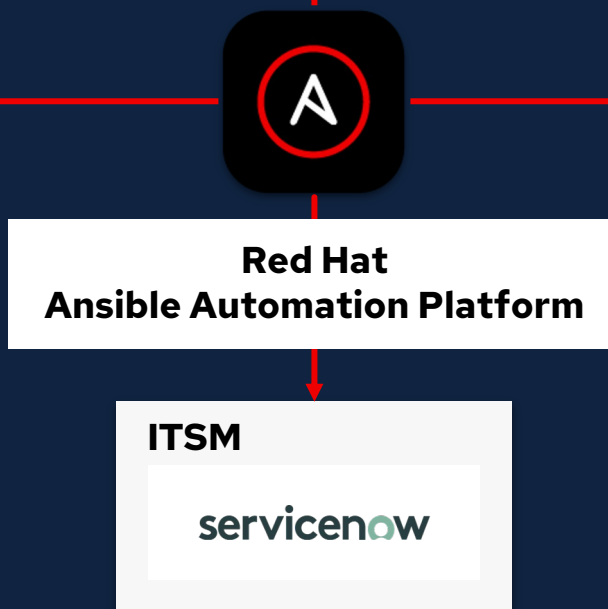
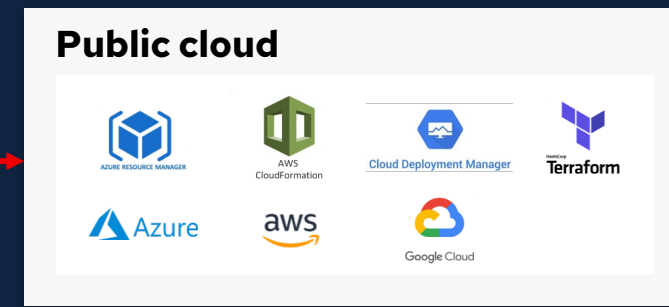
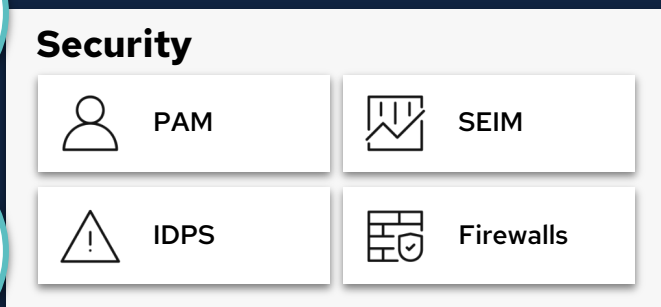
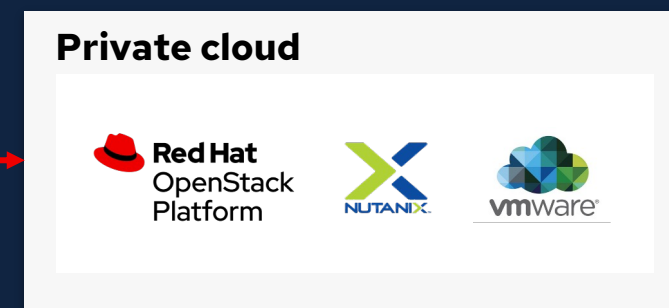
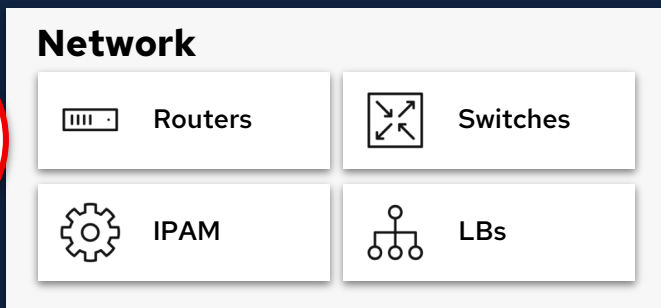
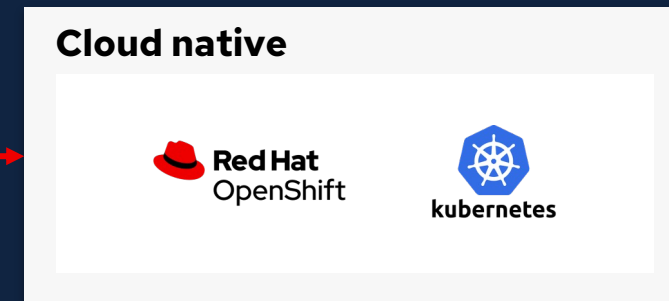
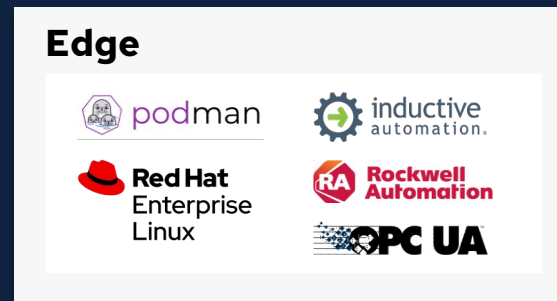
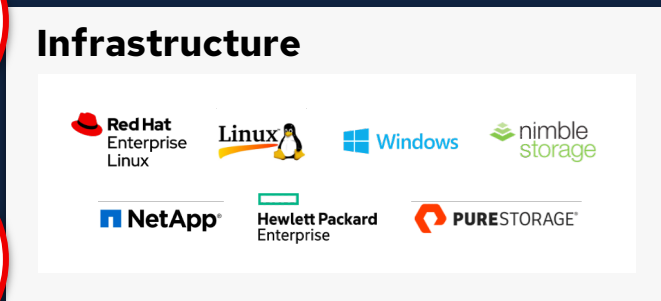
Systems integrators + Resellers

55,000

GitHub stars

1000+

Active open source contributors



# Managing the Modern Demands of Infrastructure at Scale

 **Red Hat**  
Enterprise Linux

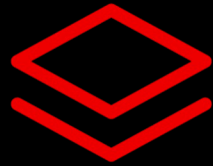
 **Red Hat**  
Insights

**Red Hat Enterprise Linux**  
Image Builder

 **Red Hat**  
Satellite



# Red Hat's approach to Edge computing



## Platforms and portfolio .....

Powerful building blocks including middleware, storage, and services, with Red Hat OpenShift, RHEL, Ansible at the heart of all



## ..... Open source leadership

Driving development of open standards while providing hardened, fully supported enterprise-grade platforms



## Partner ecosystem .....

Partnering with hardware and software vendors to provide solutions to meet customer needs



**“Red Hat is a catalyst in the community of customers, partners and contributors bringing the power of open source to the enterprise.”**

Red Hat  
**Summit**

**Connect**

Thank You